

Both of the Rab5 subfamily small GTPases of *Trypanosoma brucei* are essential and required for endocytosis

Belinda Hall, Clare L. Allen, David Goulding, Mark C. Field*

Department of Biological Sciences, Imperial College, Exhibition Road, London SW7 2AY, UK

Received 1 April 2004; received in revised form 15 July 2004; accepted 16 July 2004

Supplementary data: Figure S1

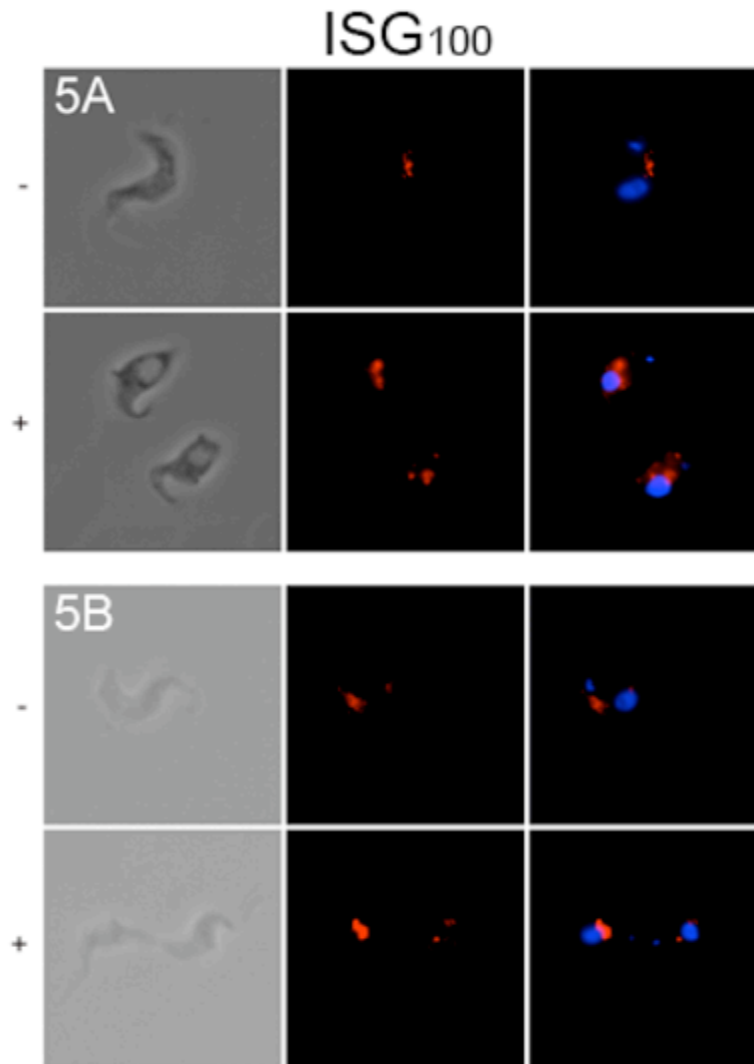


Figure S1: ISG₁₀₀ location is unaltered by RNAi of TbRAB5A or TbRAB5B. Indirect immunofluorescence of ISG₁₀₀ in cells subjected to suppression of TbRAB5A and TbRAB5B mRNA. ISG₁₀₀ immunofluorescence is shown in red, DNA stained with DAPI in blue. Left panel is phase, right panel is the fluorescence merge. + = cells induced with tetracycline, - = uninduced.