

Supplementary material for:

## **E/ANTH domain proteins participate in AP2-independent clathrin-mediated endocytosis**

Paul T. Manna<sup>1,‡</sup>, Catarina Gadelha<sup>2</sup>, Amy E. Puttick<sup>1</sup> and Mark C. Field<sup>3,\*</sup>

1. Department of Pathology, University of Cambridge, Tennis Court Road, Cambridge, UK. CB2 1QP.
2. School of Life Sciences, University of Nottingham, Queen's Medical Centre, Nottingham, UK. NG7 2UH.
3. Division of Biological Chemistry and Drug Discovery, University of Dundee, Dundee, Scotland, DD1 5EH.

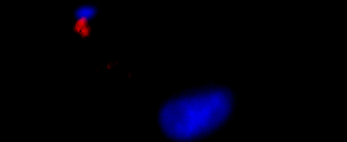
### **Supplemental figure legends**

**Fig. S1. Localisation of TbCALM.** C-terminus endogenous locus tagging with a triple HA tag, detection with Alexa-fluor 546, and co-staining with FITC-ConA at 4°C indicate TbCALM to localize to the Flagellar pocket. DNA is stained with DAPI (blue). Scale bar equals 2 µm.

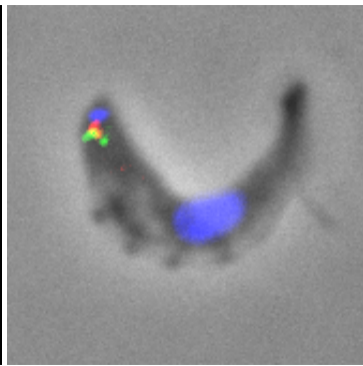
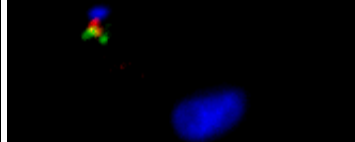
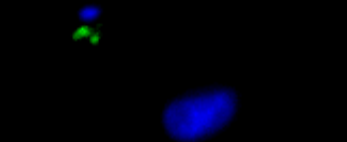
**Fig. S2. Co-localisation of TbEpsinR-GFP with clathrin in COS-7 cells.** Transient expression of TbEpsinR-GFP and co-staining with anti-clathrin heavy chain shows colocalisation with clathrin in cytoplasmic punctae. DNA is stained with DAPI (blue).

**Fig S3. Golgi profiles following TbCALM or TbEpsinR depletion or tandem depletion.** Gross morphology of the Golgi apparatus as seen in thin-section transmission electron micrographs does not show any major defects following E/ANTH domain protein depletion.

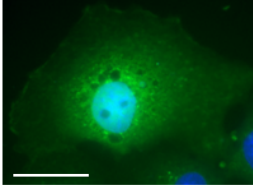
TbCALM-3HA



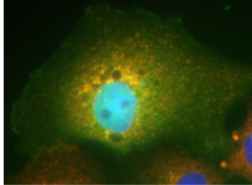
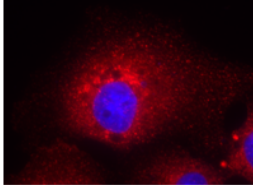
FITC-ConA



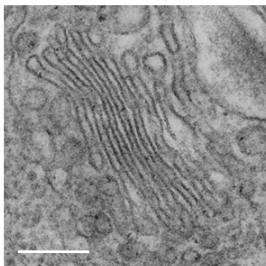
TbEpsinR-GFP



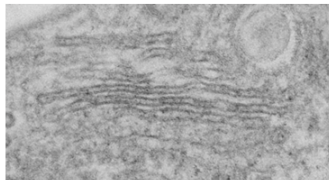
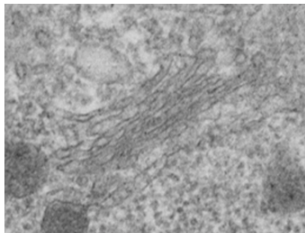
Clathrin (X22)



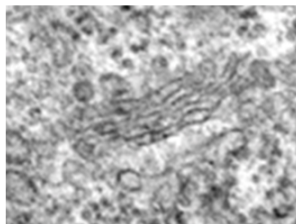
Control



TbCALM RNAi



Double RNAi



TbEpsinR RNAi